

ANALYSIS OF RESPONSE

TYPICAL DATASHEET (validation data)

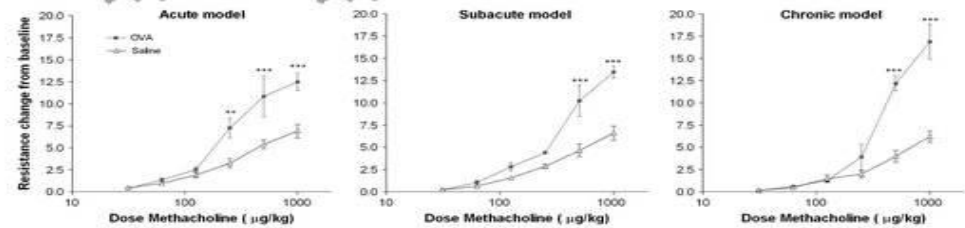
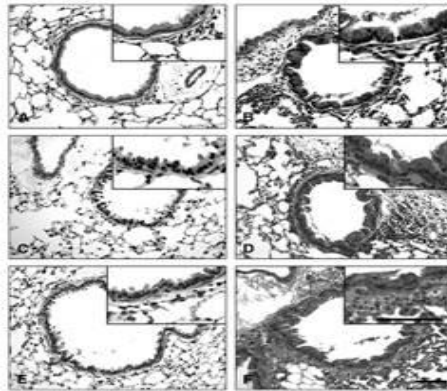
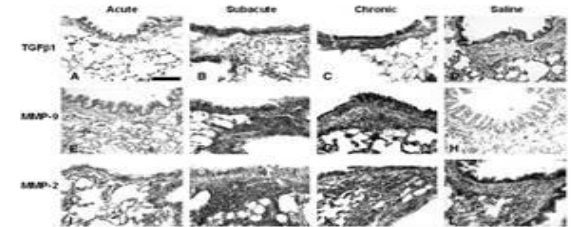
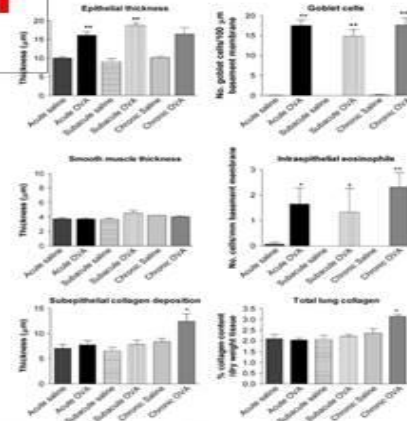
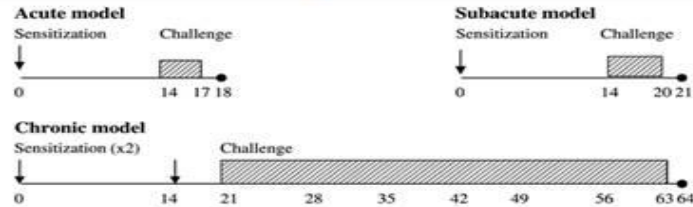


TABLE 1. BRONCHOALVEOLAR LAVAGE DIFFERENTIAL CELL COUNTS AND OVALBUMIN-SPECIFIC IgE TITERS

	Acute Saline	Acute OVA	Subacute Saline	Subacute OVA	Chronic Saline	Chronic OVA
Total cells ($\times 10^3$)	57.71 \pm 19.33	366.14 \pm 86.11 [†]	180.38 \pm 114.88	1726.3 \pm 921.60 [†]	137.81 \pm 29.26	182.50 \pm 79.27
Eosinophils ($\times 10^3$)	0.21 \pm 0.40	111.39 \pm 96.03 [†]	0.23 \pm 0.53	1003.5 \pm 691.51 [†]	0.05 \pm 0.15	5.96 \pm 7.75 [†]
Neutrophils ($\times 10^3$)	0.51 \pm 0.36	6.14 \pm 1.67 [†]	2.51 \pm 1.33	185.95 \pm 113.48 [†]	6.96 \pm 12.46	5.89 \pm 4.59
Lymphocytes ($\times 10^3$)	0.26 \pm 0.31	6.42 \pm 2.55 [†]	3.31 \pm 3.74	189.21 \pm 182.68 [†]	1.32 \pm 0.76	14.70 \pm 7.89 [†]
Monocytes ($\times 10^3$)	56.94 \pm 19.28	208.33 \pm 104.30 [†]	174.32 \pm 113.18	347.58 \pm 86.84	129.48 \pm 28.30	155.95 \pm 67.37
OVA-specific IgE*	0.027 \pm 0.005	1.73 \pm 1.15 [†]	0.000 \pm 0.000	6.22 \pm 3.17 [†]	0.000 \pm 0.000	36.45 \pm 13.92 [†]