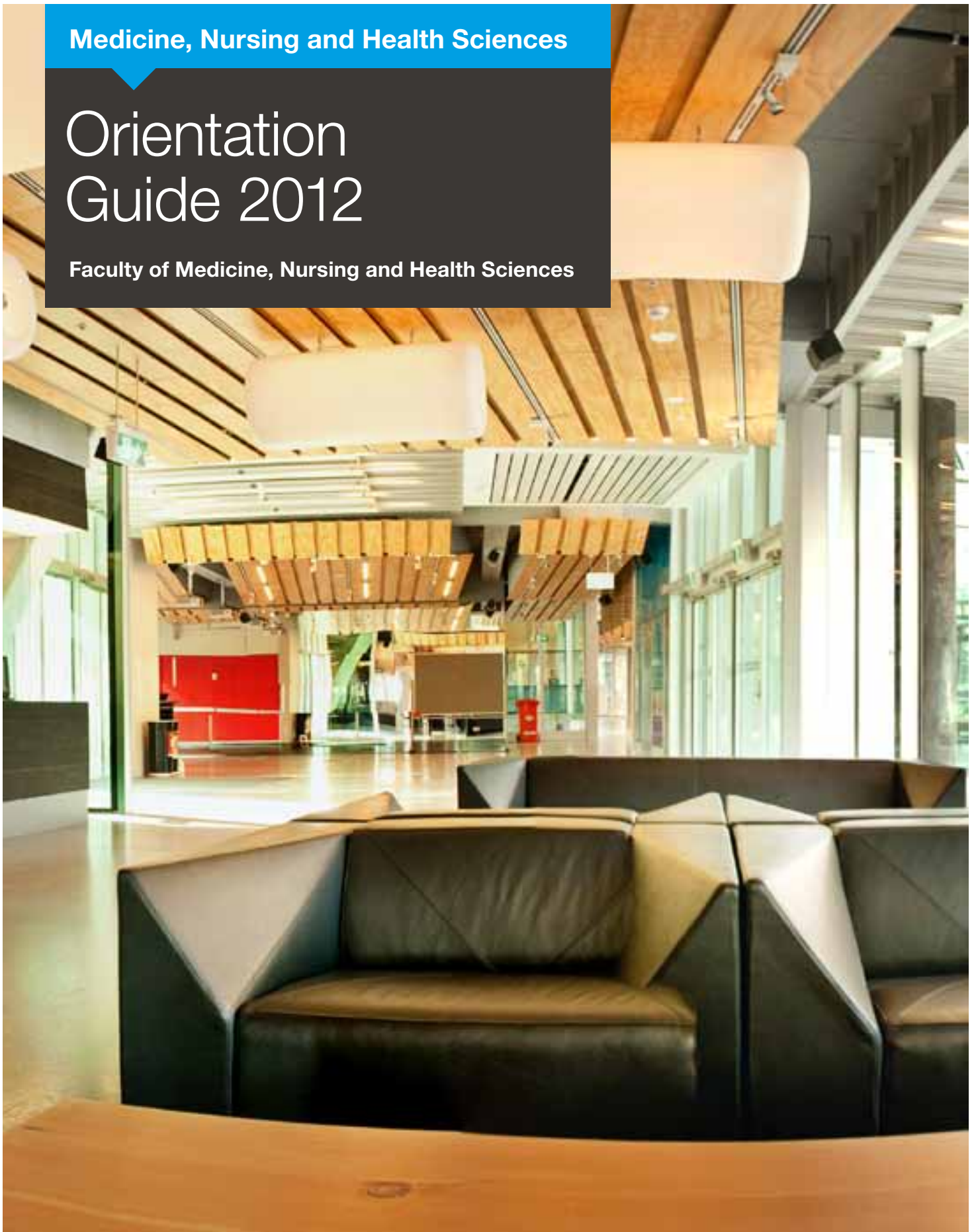




Medicine, Nursing and Health Sciences

Orientation Guide 2012

Faculty of Medicine, Nursing and Health Sciences





Contents

Welcome	1
Getting started	2
Enrolment	4
Articulation And Flexibility	7
Assessment and Examinations	8
IT and Campus Services for Students	10
School of Biomedical Sciences	15
Department of Community Emergency Health and Paramedic Practice	15
Department of Health Social Science	17
Department of Nutrition and Dietetics	17
Health Professional Education	19
Department of General Practice	19
School of Nursing and Midwifery	21
School of Primary Health Care (Peninsula)	21
Department of Medical Imaging and Radiations Sciences	21
School of Psychology and Psychiatry	23
Department of Social Work	23
Medical Schools	25
Department of Epidemiology and Preventive Medicine	25
Victorian Institute of Forensic Medicine	27
Obstetrics and Gynaecology	27
Academic Board of Anaesthesia and Perioperative Medicine	27
Higher Degree's by Research	29
Notes	30



Welcome

The Faculty of Medicine, Nursing and Health Sciences at Monash University is one of Australia's leading health faculties and is the University's largest research faculty.

It is home to a number of leading medical and biomedical research institutes and groups, and has contributed to advances in many crucial areas: *in vitro* fertilisation, obesity research, drug design, cardiovascular physiology, functional genomics, infectious diseases, inflammation, psychology, neurosciences and mental health.

The Faculty takes pride in delivering outstanding education in all courses, and are fortunate to be able to offer students the opportunity to work with world class researchers who work across disciplines including laboratory-based medical science, applied clinical research, and social and public health research. This places us in a unique position to expose students to the possibilities offered by newly discovered knowledge and research.

As a Monash graduate you will be inspired by our internationally-focused, research-led teaching. You will be equipped to live, learn, work and contribute globally, with a commitment to equity and social inclusion.

On behalf of the Faculty of Medicine, Nursing and Health Sciences, we welcome you and wish you every success to achieve all your academic and personal aspirations.

Getting started

Take the opportunity to find out about the different teaching and learning processes of the University, familiarise yourself with your new surroundings, pick up details about your course and get to know your lecturers, tutors and other new students.

Further details: www.monash.edu/orientation

Important dates 2012

A complete list of University dates is available at: www.adm.monash.edu/excerv/about/principal-dates/index.html

Student ID Card

You can obtain your student ID card from the Student Service Centre on your home campus by presenting photo ID, offer letter or enrolment letter, WES Transaction Numbers or a Faculty Stamped 'Course Enrolment' form or 'Manual Enrolment Slip'.

Personal details

As a student, you are responsible for ensuring that the University has your current mailing address and contact details. You can change your contact details at any time by visiting my.monash.edu.au and selecting 'Change of Address'.

Student email account

www.its.monash.edu/students/email/faq.html

All new students to Monash are used with a University email account. The University send all official emails to Monash email accounts only. It is recommended that you access your Monash email account on regular basis. Please note all correspondence with the University (via email) should be conducted via your student email account.

Enrolment and timetabling

Commencing students enrol via the Web Enrolment System (WES) at www.my.monash.edu.au/wes. Timetable information is available from the Monash University Timetabling System (MUTTS) at www.mutts.monash.edu.au/MUTTS.

All students enrolling in on-campus units are required to register in their selected classes via allocate available from allocate.its.monash.edu.au/ Some on-campus units may allocate+ you automatically when there is only one option to select. However, you are required to choose tutorials and classes/lectures if there is more than one option.

You should complete the following steps to finalise your enrolment:

1. Enrol via WES
2. Build a timetable at MUTTS
3. Allocate+ (for all on-campus classes where more than one option is available)

All class times and venues are subject to alteration without notice so for timetable and room allocation go to my.monash.edu.au.

Credit

Students who have completed prior study may be eligible for credit. Credit is available for units which are considered, by the Course Coordinator, to be equivalent to units within your course and have been completed within the last 10 years (some earlier time limits apply for some courses). Further information on credit and recency requirements, please visit www.med.monash.edu.au/policies/credit.html

To apply for credit you need to submit a Credit Application form, together with supporting documentation. This form is available from www.adm.monash.edu.au/service-centre/forms/ and needs to be submitted by the first Friday of either semester one or semester two.

Textbooks

www.bookshop.monash.edu

Details of prescribed textbooks will be provided at your first lecture, or with study material for OCL students, or you can obtain details by contacting the Bookshop and quoting the unit code.

Publications and Student Guides

The Faculty encourages you to familiarise yourself with the following publications

- The postgraduate and undergraduate handbooks, and 2012 unit offerings are available at www.monash.edu/pubs/handbooks
- Money matters – a guide to student finance available at www.adm.monash.edu.au/community-services/money-matters/
- Computer Resources and IT information for students www.its.monash.edu/students/

Hours per semester

As a guide during semester, for every three hours of teaching per week, you will also complete an additional nine hours of independent study per week (reading, assignments, group discussion, revising notes etc) totalling 156 hours per semester (for a 6cpt unit) for each enrolled unit.

Discussion Board

www.my.monash.edu.au/community/discussion

You are encouraged to regularly visit the discussion boards via you're my.monash portal as a way of keeping up to date with upcoming events, career information, and general University administration. It allows you to discuss assignments and units with other students who are further along in their studies. The discussion board is also an area where you can chat about anything, and can be a great way to meet others in your course.

International students

www.monash.edu/international

The International Student Support Unit (ISSU) is the first contact point for international students studying at Monash. Offices are located at the Berwick, Clayton, Caulfield, Peninsula and Gippsland campuses. Advice and assistance is available through the campus-based offices and includes visa and government regulation queries; Overseas Student Health Cover (OSHC) information and assistance; cultural and/or educational adjustment; Orientation and various students support programs; farewell/returning home programs; individual student advice; family support programs and referral to other University services and support programs including student organisations.

For more information phone 1800 181 838.

Monash Campus Maps

www.monash.edu/campuses

Transport and Parking

There are a number of ways to travel to the various campuses, including:

- Train
- Bus
- Car
- Bicycle
- Walk

For more information, visit:

www.fsd.monash.edu.au/travel-parking

Enrolment

Online Enrolment

www.my.monash.edu.au/wes

Commencing local students enrol via the University Web Enrolment System (WES) at the above address. The WES site contains both course information and enrolment instructions.

You can access WES with your student Authcate username and password. International students are required to attend the International Orientation Program which includes registration and enrolment sessions. For details refer to www.monash.edu/study/international/prepare/orientation.html.

Students should enrol in units that follow the normal progression of their course. Students commencing in first semester are required enrol for both first and second semester units. Students commencing in second semester are required to initially enrol in second semester units only. Students who do not enrol within the specified time frame may face late enrolment penalties and in some cases forfeit their place in the course.

The University's Fee's Unit sends an *'Enrolment Details and Fee's Advice Notice'* to each student with details of the fee's liable before the start of each semester.

Re-enrolment

www.my.monash.edu.au/wes

All students should re-enrol for the following academic year via WES, by November 30 each year. You will be advised in writing and by email, through your Monash email account, on the procedures for re-enrolling and will be referred to information websites. Students who fail to re-enrol within the specified times will be charged a late enrolment fee and may lose their place in their course. International students who do not maintain a full-time enrolment will be in breach of their visa conditions.

Changing your enrolment

You can change your enrolment (add or discontinue units) through WES during specified periods only. Outside these periods, changes to enrolments must be made in writing by completing and lodging an *'Enrolment Amendment Form'*, available from www.adm.monash.edu/service-centre/forms. This form must be lodged with the relevant school or department by the University deadlines to avoid incurring late fees, or fail grades.

Unit discontinuation

Unit discontinuation must be made within University deadlines. Refer to 'Important Dates' in this publication.

Cancellation of Units

A student's school or department will endeavour to give every possible assistance and advice concerning the unit choice, however the onus is on the student to ensure that the units selected meet the course regulations and requirements. Unit choice should be in line with the course progression, which is sent to students with their letter of offer. The Faculty/School/Department does not take any responsibility for error in unit selection.

Intermission

Students may apply for intermission (leave of absence) for temporary breaks in their studies. Intermission is normally granted for one year only, eg two semesters. This can be taken for a single semester or for consecutive semesters. Any period of intermission taken by a student will be counted towards the time limits for the completion of the course.

Intermission is only available to international students in exceptional circumstances as outlined in the ESOS Act. An *'Intermission application form'* is available from www.adm.monash.edu/service-centre/forms.

Complementary Study

If you wish to study at another institution and obtain credit for an equivalent Monash unit, you must first obtain approval from your course director before undertaking any study at another institution. In order to determine if the unit offered by that institution is acceptable, you will need to obtain a copy of the appropriate handbook entry for the unit and lodge it for approval together with a *'Complementary Study Application form'* available at www.adm.monash.edu/service-centre/forms.

Monash Abroad

www.monash.edu/students/studyabroad

All Monash students can incorporate a semester (or two) of study at an overseas university as part of their academic program.

For more information on Monash Abroad your attend an information session at Clayton campus.

Passport Units

The Faculty of Medicine, Nursing and Health Sciences offers a number of opportunities for its students to undertake to enhance their university experience.

These units are designed to enrich and improve your career prospects, and enrich your personal development, by broadening your knowledge, skills and experiences.

Some units can form part of your course, where others will enhance your course.

Passport opportunities can include:

Enhance

- Advanced Studies
- Depth
- Leadership

Act

- Industry Linkage
- Internship
- Leadership
- Volunteering

Investigate

- Research Challenge

Explore

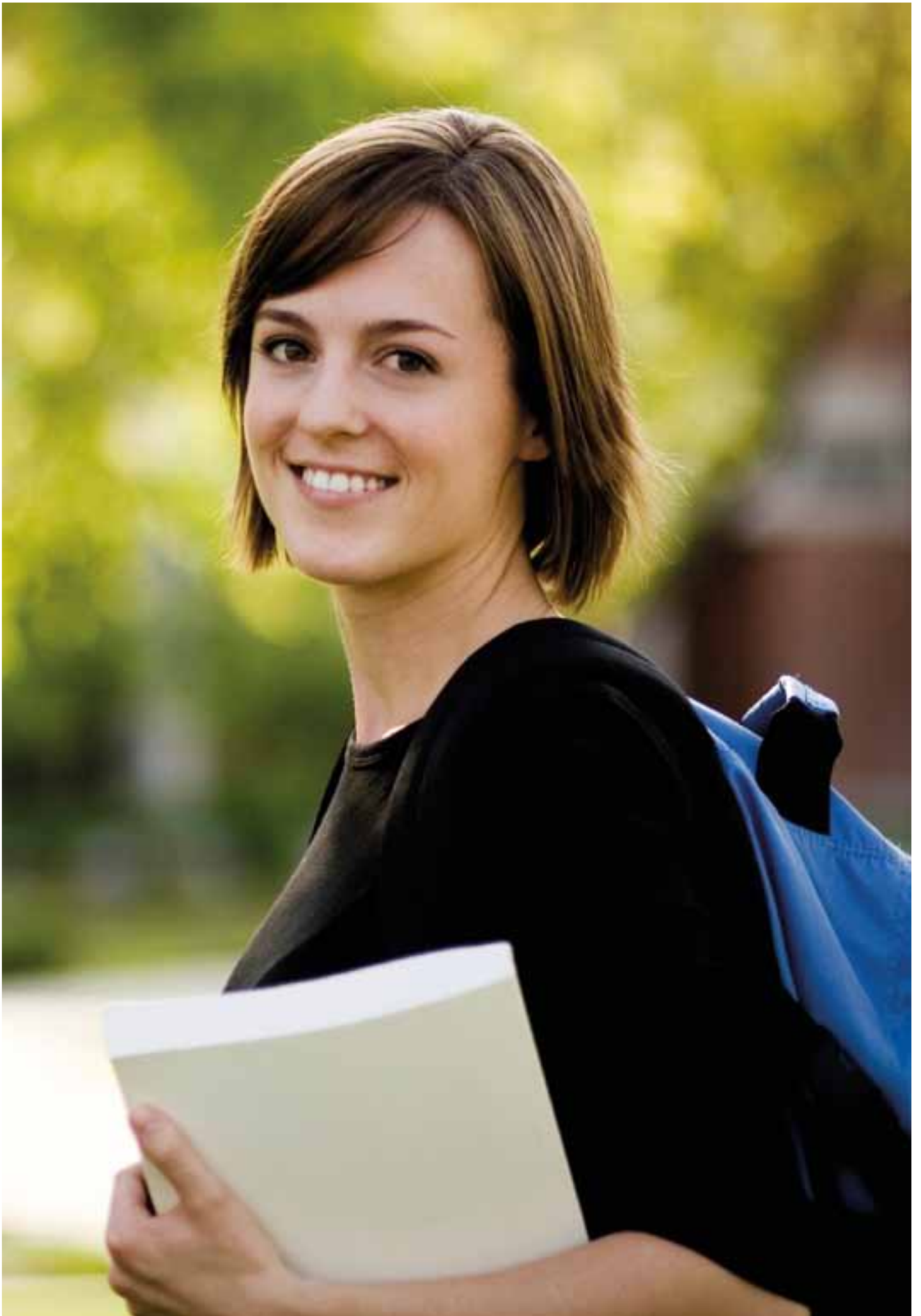
- International Short Field Experience
- Connect

A current list of Passport Units that can be incorporated into your course are available here: www.med.monash.edu.au/current/passport-units.html

Discontinuation of Studies

Students who wish to withdraw from all units and end their enrolment in their course must complete and lodge an *'Enrolment Amendment Form'* indicating total withdrawal from the course by the census date. This action is essential to avoid incurring fees or fail grades.

Students who withdraw from their course by the census date and after paying their fees, may apply for a refund by submitting an *'Application for Refund of Fees'* available from the Fee's Unit: www.monash.edu/fees/discounts-refunds/refunds



Articulation And Flexibility

Exiting early from your degree

Some postgraduate courses offered by the Faculty have exit points at Graduate Diploma or Graduate Certificate level. The exit award will depend on you meeting the course requirements (refer to the course structure for course requirements) of these programs. The postgraduate handbook includes information on exit points, refer to applicable course entry.

Student Fees

www.monash.edu/fees

The University's Fee's section mails an *'Enrolments Details and Fee's Advice Notice'* to each student with details of the fees liable before the start of each semester.

Fees must be paid by the due date specified on the invoice otherwise a late payment fine will be incurred. If this is not paid within the specified time, action will be taken by the University to invalidate your enrolment.

Fee information and relevant forms are available from the website.

Inquiries should be directed to the Fee's Unit by telephoning +61 3 9902 6011.

Alternatively, queries can be submitted at:
www.ask.monash.edu.au

Refund of Fees

www.monash.edu.au/fees/discounts-refunds/refunds

Any changes to course load, up to the census date, may result in an alteration of fees payable. The University will advise students of any additional charges or credits owing as a result of enrolment changes.

Students who have a credit owing may apply for a refund or apply it to their next semester fee charges.

Fee Assistance

www.monash.edu.au/enrolments/loans/domestic-full-fee.html

The Australian Government's loan scheme (FEE-HELP) provides an income contingent loan facility for eligible students enrolled in fee-paying non-research award places.

Australian citizens and holders of a permanent humanitarian visa are eligible for FEE-HELP.

New Zealand citizens and holders of other permanent visas do not have access to FEE-HELP loans and must pay their tuition fees upfront.

Scholarships and Bursaries

www.adm.monash.edu/scholarships/opportunities/faculty/medicine.html

Telephone: +61 3 9902 6011

Email: scholarships@monash.edu.au

Apply to Graduate

www.monash.edu/graduations

Students are responsible for applying to graduate. Information on how to apply to graduate can be found at the above website.

Graduation ceremonies are held each year from March to May and October to December, with additional ceremonies in overseas locations.

The closing date for applications for ceremonies in the first semester is the end of November of the previous year and in second semester the closing date is the end of June of the same year.

Students are advised not to delay their application if they are waiting for final examination results, as an application can be deferred if necessary.

Professional Accreditation

A number of professional bodies in Australia recognise some of the Faculty's degrees as providing the basis for meeting the academic requirements for entry to such bodies.

For further details please refer to the 2012 Undergraduate or Postgraduate handbook at www.monash.edu/pubs/handbooks

Alumni

www.monash.edu/alumni

With a Faculty of Medicine, Nursing and Health Sciences degree you are part of the global community of Monash University Alumni. All Monash graduates can access the activities, events, contacts and benefits offered by the University's alumni program.

Assessment and Examinations

Exam timetable

At the beginning of each semester, all enrolled students will receive an email, via their Monash email account, regarding examination procedures, examination timetable publication dates and general examinations and results information. The email advises students to access the web address at www.monash.edu/exams to obtain detailed information relevant to the current semester of study. The information at this site includes the timetable publication date, results release date and all matters relating to the conduct of examinations. Examination timetables are published six weeks before the commencement of the examination period. Note that if students misread the examination timetable or fail to present for an exam, they will not be given special consideration, nor will they be entitled to sit a supplementary examination. Please refer to: my.monash.edu.au for your personal individual examination timetable.

Special Consideration

Students may apply for special consideration if they have been adversely affected by serious illness or other exceptional causes beyond their control. Special consideration can be submitted for in-semester assessment, and/or deferred final assessment. An application must be lodged no later than two University working days after the submission deadline for a particular piece (if in-semester) or for deferred final assessment within 48 hours of your last exam scheduled in the examination period or no later than two University working days after the due date of the end-of-semester assessment task.

The granting of a deferred exam is at the discretion of the School/ Department and the Board of Examiners. In some cases, the Board of Examiners may allow for Supplementary Assessment to be submitted.

Students will not be given special consideration for misreading the examination timetable.

Mark adjustments will not be made in any circumstances.

For further information, please refer to: www.med.monash.edu.au/current/special-consideration.html

Supplementary Assessment

The Faculty may award supplementary assessment to a coursework student who has failed a unit in any semester of study (no more than 12 months previously), provided they have:

- Completed all the work for the unit;
- Sat the final examination;
- Obtained a mark no more than five per cent (or equivalent) below the required pass figure
- Passed all other units in which the student was enrolled during the teaching period concerned

Please note that the granting of supplementary assessment is not automatic.

Results

Results are published at the end of each semester via the student portal www.monash.edu/exams, SMS messages and IVR (interactive voice response). Students will receive an email, via their student email account, during the semester regarding the results publication dates and the available access methods.

Unit Assessment

Assessment in a unit may be made up of several components. Some units stipulate hurdle requirements. Details of this will be provided in the online handbook and individual unit guides.

The Chief Examiner will take into account all aspects of assessment and will determine the final result a student will receive.

Students have two weeks from the release of a result for an individual assessment item, to make a formal request for remark.

Clinical/Fieldwork Placement Guidelines

The Faculty has produced guidelines to provide important information for students of health professional courses in the Faculty about clinical/fieldwork placement requirements and expectations. The Guidelines are available on the Faculty website: www.med.monash.edu.au/policies/

It is recommended students review this booklet prior to each placement, and that it is taken with them on all placements.

Professional Behaviour

The Faculty has produced a professional behaviour guideline to assist in the development of student's professional behaviour in line with the vocation they will pursue on graduation. The guidelines are available here:

www.med.monash.edu.au/policies/

All students whose course involves clinical placements, should familiarise themselves with the expectations of the Faculty in relation to professional behaviour conduct as it applies to the discipline they are studying.

Unsatisfactory Progress

A student's progress for each academic year is deemed unsatisfactory for any of the following reasons:

- Passed less than 50 per cent of enrolled credit points over the academic year (December of the previous year to November); or
- Failed the same compulsory (core) unit twice; or
- Failed to comply with any terms or conditions imposed by an academic progress committee of the Faculty.

Any student who has not been able to fulfil these requirements will receive a *'Notice of Referral'* from the Faculty, requiring them to explain their unsatisfactory progress and why they should not be excluded from further studies.

For more information please refer: www.adm.monash.edu/communityservices/academicprogress.

Collusion, Collaboration, Plagiarism and Cheating

The policies on collusion, collaboration, plagiarism and cheating are available in the University discipline guidelines available at: www.policy.monash.edu.au/policy-bank/academic/education/conduct/plagiarism-policy.html

All students should be aware of the University rules (Statute 4.1) which prohibit plagiarism, cheating and collusion and that severe penalties may be imposed on students who engage in, or who support other students engage in activities which seek to undermine the integrity of the unit assessment process. It is crucial that you make appropriate acknowledgement of the work you refer to otherwise you risk being accused of plagiarism.

Plagiarism – means to take and use another person's ideas and/or manner of expressing them and to pass them off as your own by failing to give appropriate acknowledgment.

Cheating – means seeking to obtain an unfair advantage in an examination or in other written or practical work required to be submitted or completed by a student for assessment.

Collusion – is the presentation of work which is the result in whole or in part of unauthorised collaboration with another person or persons.

Within the University, plagiarism is regarded as a form of theft and is therefore a serious offence.

IT and Campus Services for Students

Computer Accounts

www.its.monash.edu/students

All current students will be granted an Authcate account that can be used to access IT facilities and online library resources. The account also provides access to electronic services on the Novell network including email, my.monash, library, Blackboard, and access to other computer systems if required by units.

Students register for an account online at the 'Computer account and password' web page.

Computer Labs

www.its.monash.edu/students/labs/

Register with the ITS helpdesk for access, contact: +61 3 9903 2777

Computer resources

Student Software

Free software for use by students at home is available from the ITS website: www.its.monash.edu/students/software/ask.monash inquiry system

www.my.monash.edu.au/askmonash

'ask.monash' is a self-help system that lets students submit requests online and find out information relating to admissions, enrolments, examinations, fees, graduations, scholarships and IT services

Online Learning

my.monash.edu.au

Blackboard is an online learning environment used by a large number of units in the Faculty. While the content varies with each unit, Blackboard resources and features include the unit outline; lecture notes available for download; online discussion groups; calendar of key semester dates and quizzes and assessments.

The Blackboard helpdesk can be contacted on: +61 3 9903 1250.

Campus Support Services

Child Care

www.adm.monash.edu.au/community-services/family/child-care/

Monash provides a number of services ranging from full-time, part-time and casual care for children at Caulfield, Clayton, Gippsland and Peninsula campuses.

Health Wellbeing and Development (HWD)

www.monash.edu.au/health-wellbeing/index.html

HWD provides a wide range of services for students. HWD consists of counsellors, medical practitioners, multi-faith chaplains and student advisors who focus on supporting and promoting physical and emotional wellbeing, including accommodation and financial aid; work/study life balance issues; transition to university issues right through to university through to graduation; and fostering active involvement in, and the building of, a caring safer community.

Health Service

www.adm.monash.edu.au/community-services/health/

The health service provides confidential services such as male and female doctors (specialising in women's health, sexual health, and sports medicine), campus nurse and massage. Other services include nutrition, physiotherapy and optometry.

International Postgraduate Academic Support Unit (IPAS)

www.med.monash.edu.au/current/ipas.html

IPAS provides support for postgraduate research and coursework students to improve academic performance in learning, researching and studying and the use of English. Programs focus on language, learning and cultural support to address students' academic and professional learning needs.

Student Academic Support Unit (SASU)

www.med.monash.edu.au/current/sasu.html

SASU is an academic support unit of the Faculty. The unit's teaching programs provide assistance to undergraduate students to develop professional communication skills and academic skills attuned to the demands of their disciplines. Particular emphasis is placed on the needs of international students and local students with English as a second language. Classes are conducted on topics including academic writing; oral presentation skills and clinical communication skills – all of which are advertised through course convenors and Blackboard.

Students are encouraged to drop in to the office or phone to make an appointment for individual assistance.

Library Learning Skills

www.lib.monash.edu.au/learning-skills/

Learning skills advisers assist students in improving their academic language and approaches to learning, including:

- academic English
- study methods and exam preparation
- effective listening and note-taking
- problem-solving and critical thinking
- reading strategies
- essay, report and thesis writing
- writing for research projects
- oral communication and presentation

Drop-in sessions with learning skills advisers are open to all students and commence in week two and run through to week 14. No bookings are required.

Legal Service

www.law.monash.edu.au/legal/mols/

The Monash Oakleigh Legal Service (MOLS) is a partnership between Monash Law School and Victoria Legal Aid. Through the service, members of the community can obtain free legal advice on a variety of legal matters. MOLS is run by appointment only and legal problems can not be discussed over the telephone. Forty-five minute appointments are available during the following times and should be made by phoning: +61 03 9905 4336 during business hours:

Monday: 1.30 pm – 3 pm

Tuesday: 9.30 am – 11 am

Wednesday: 6.30 pm – 8 pm
(volunteer advice only session)

Thursday: 2 pm – 3.30 pm

Appointment times are subject to change.

Monash Student Unions and Associations

Each campus has its own student union or association which represents all students for that campus. They provide information, advice, referral and advocacy to students experiencing difficulties whilst studying at Monash. They are actively involved in campus life and activities, and also attend University meetings, advocating for University wide changes.

The Monash University Gippsland Student Union (MUGSU) also offers services to off-campus students enrolled through the Gippsland campus.

Phone: +61 3 5122 6248

Email: union@general.monash.edu.au

MONSU (Caulfield, Peninsula and Berwick students)

Phone: +61 3 9903 2567

Email: president@monsucaulfield.org.au

MSA (Clayton students)

Phone: +61 3 9905 3138

Email: msa@adm.monash.edu.au

MUBS (Berwick students)

Email: admin.mubs@adm.monash.edu.au

Web: berwick.monash.edu.au/students/current/mubs/index.html

The Monash Postgraduate Association (MPA)

Representative body for all coursework and research postgraduates on all Victorian campuses of Monash University. Services include advice and advocacy, academic and social support.

Phone: +61 3 9905 3198

Email: mpa@monash.edu.au

The Gippsland Association of Postgraduate Students (GAPS)

offers services – including social programs and seminars – for Gippsland enrolled on-campus and off-campus students.

Phone: 1800 816 620
or +61 3 5122 6248

Monash Residential Services

www.mrs.monash.edu

Monash Residential Services offer on-campus accommodation and an online database for students seeking off-campus housing.

Salaam Monash

www.monash.edu.au/international/student-services/salaam.pdf

At Monash, we understand that Muslim students have specific social, religious and cultural needs. Consequently, Salaam Monash is published as a resource handbook for new Muslim students in Victoria. This handbook will assist you with the process of settling and adjusting to life in Australia.

Sport and Fitness

<http://sport.monash.edu.au/>

Monash Sport provides a wide range of high quality health and wellness services, activities and programs across all campuses for students, staff and the wider community. Services include aerobics and spin classes; gymnasium and sporting facilities and equipment hire; fitness programs; personal training and assessments. Community fitness events, trips and tours are also available to all those in the Monash community. Discounts are available for students.

Student Equity and Diversity Centre

<http://adm.monash.edu/sss/equity-diversity/>

The EDC supports students to reach their full potential by promoting inclusive practices across the University. This includes: equal opportunity; disability liaison; student equity; women's leadership and advancement; and work/life balance.

Student Service Centre

www.adm.monash.edu.au/service-centre/

The Service Centre acts as an interface for Monash and provides general information about re-enrolment, fees, examinations, academic transcripts, student records and graduations.

Monash Employment and Career Development

<http://careers.monash.edu.au/>

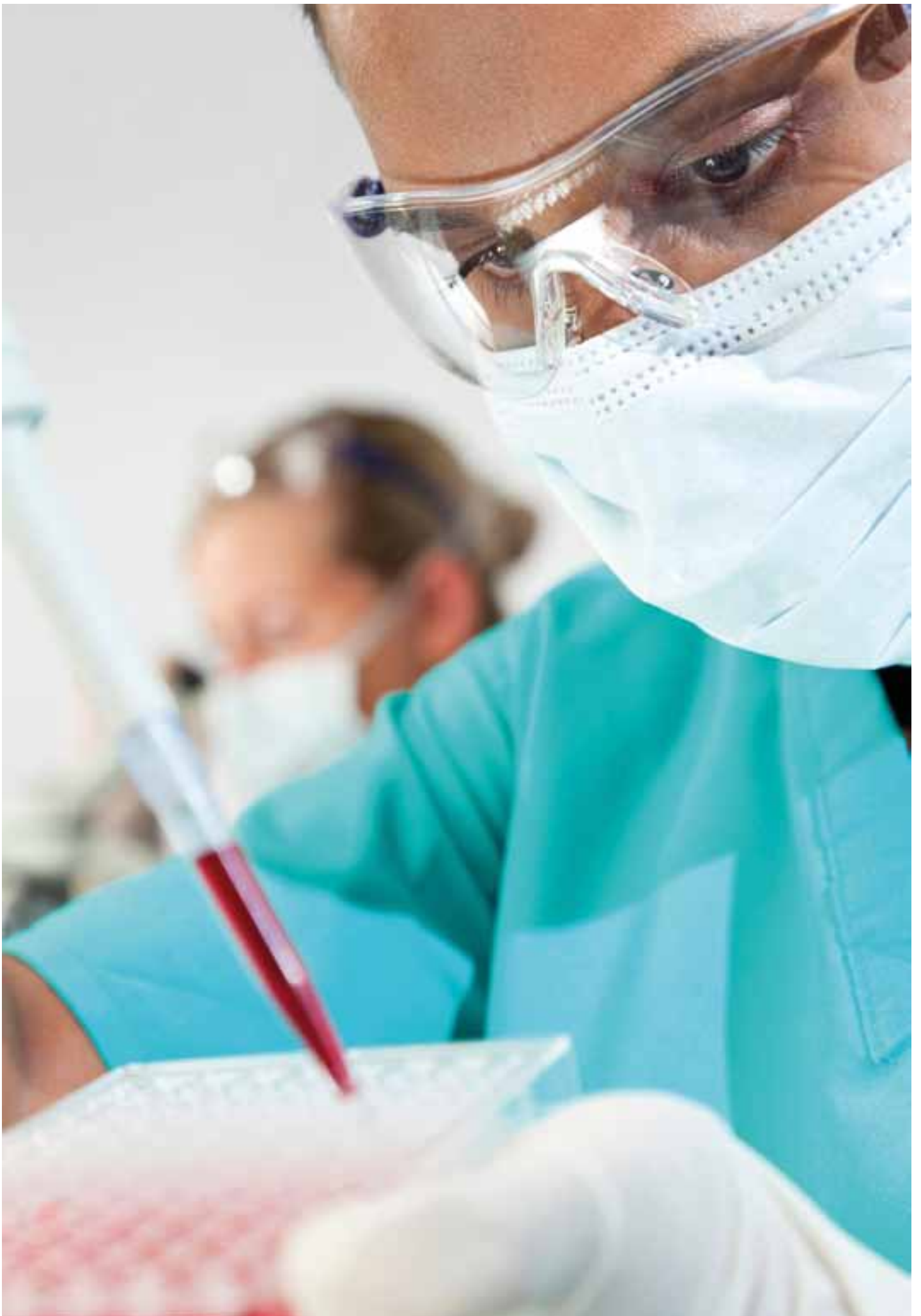
Students can seek assistance with career choices and graduate employment opportunities. They provide programs to assist graduate students to plan and access their career choice, resume and cover letter writing, hold seminars, fairs and forums are available free to students.

Monash Campuses

www.monash.edu.au/campuses/

This website has information on each campus including parking, transport and maps.





School of Biomedical Sciences

Programs Offered in 2012

- 2230: Bachelor of Biomedical Science
- 3975: Bachelor of Biomedical Science (Scholar Program)
- 3976: Bachelor of Biomedical Science Advanced with Honours
- 3879: Bachelor of Biomedical Science and Bachelor of Engineering
- 3418: Honours degree of Bachelor of Biomedical Science

Contact Details

Telephone: +61 3 9905 1212
Fax: +61 3 9902 9500
Email: biomed@monash.edu

Department of Community Emergency Health and Paramedic Practice

Programs Offered in 2012

- 3445: Bachelor of Emergency Health (Paramedic)
- 3881: Honours degree of Bachelor of Emergency Health (Paramedic)
- 3876: Graduate Certificate in Emergency Health
- 3877: Graduate Diploma of Emergency Health
- 3878: Master of Emergency Health

Contact Details

Telephone: +61 3 9904 4327
Fax: +61 3 9904 4168
Email: enquiries.paramedics@monash.edu



Department of Health Social Science

Programs Offered in 2012

- 4505: Bachelor of Health Promotion
- 3882: Bachelor of Health Science
- 4503: Bachelor of Health Science and Bachelor of Business
- 3870: Bachelor of Health Science and Bachelor of Social Work
- 3965: Bachelor of Health Science and Bachelor of Social Work (with Honours)
- 4502: Bachelor of Public Health
- 3971: Honours degree of Bachelor of Health Science

Contact Details

Telephone: +61 3 9903 1657
Fax: +61 3 9903 1658
Email: healthsocialscience@monash.edu

Department of Nutrition and Dietetics

Programs Offered in 2012

- 3956: Bachelor of Nutrition Science
- 3404: Bachelor of Nutrition and Dietetics
- 3865: Honours degree of Bachelor of Nutrition and Dietetics

Contact Details

Telephone: +61 3 9594 5510
Email: nutrition.dietetics@monash.edu



Health Professional Education

Programs Offered in 2012

- 3973: Graduate Certificate in Clinical Simulation
- 3413: Graduate Certificate in Health Professional Education
- 3860: Master of Health Professional Education

Contact Details

Telephone: +61 3 9501 5538
Facsimile: +61 3 9501 5546
Email: courses.cepdu@monash.edu

Department of General Practice

Programs Offered in 2012

- 2678: Graduate Certificate in Medical Acupuncture
- 0099: Master of Family Medicine
- 2677: Master of Family Medicine (Clinical)

Contact Details

Telephone: +61 3 9902 4495
Facsimile: +61 3 8575 2233
Email: Terri.Mathias@monash.edu



School of Nursing and Midwifery

Programs Offered in 2012

- 3562: Bachelor of Midwifery
- 0727: Bachelor of Nursing
- 4506: Bachelor of Nursing (Community Health)
- 3963: Bachelor of Nursing Practice
- 3953: Bachelor of Nursing Practice and Bachelor of Midwifery
- 3892: Bachelor of Nursing and Bachelor of Emergency Health (Paramedic)
- 3564: Honours degree of Bachelor of Midwifery
- 1249: Honours degree of Bachelor of Nursing
- 1240: Graduate Diploma of Midwifery
- 3565: Master of Clinical Midwifery
- 1250: Master of Nursing
- 3966: Master of Nursing Practice

Contact Details

Telephone: +61 3 9905 3968
Fax: +61 3 9905 3948
Email: enquiries.psych@monash.edu

School of Primary Health Care (Peninsula)

Programs Offered in 2012

- 3869: Bachelor of Occupational Therapy
- 3868: Bachelor of Physiotherapy
- 3891: Bachelor of Physiotherapy (with Honours)

Contact Details

Telephone: +61 3 9904 4466
Facsimile: +61 3 9904 4812
Email: occupationaltherapy@monash.edu
physiotherapy@monash.edu

Department of Medical Imaging and Radiations Sciences

Programs Offered in 2012

- 1963: Bachelor of Radiography and Medical Imaging
- 3889: Master of Medical Radiations
- 3433: Master of Medical Ultrasound

Contact Details

Telephone: +61 3 990 51212
Facsimile: +61 3 990 29500
Email: radiation.sciences@monash.edu



School of Psychology and Psychiatry

Programs Offered in 2012

- 3863: Bachelor of Psychological Science and Business
- 3883: Bachelor of Psychology (with Honours)
- 3514: Honours degree of Bachelor of Behavioural Neuroscience
- 3954: Honours degree of Bachelor of Psychological Science and Business (Psychology)
- 3561: Graduate Diploma in Mental Health for Teaching Professions
- 2088: Graduate Diploma in Psychology
- 4508: Master of Mental Health Science

Contact Details

Telephone: +61 3 9905 3968
Fax: +61 3 9905 3948
Email: enquiries.psych@monash.edu

Department of Social Work

Programs Offered in 2012

- 3426: Bachelor of Arts and Bachelor of Social Work
- 3964: Bachelor of Arts and Bachelor of Social Work (with Honours)
- 4504: Bachelor of Social Welfare
- 0004: Bachelor of Social Work
- 3864: Bachelor of Social Work (with Honours)
- 0019: Master of Social Work
- 3972: Master of Social Work (Forensic Studies)
- 3969: Master of Social Work (Qualifying)

Contact Details

Telephone: +61 3 9903 1047
Email: social.work@monash.edu



Medical Schools

Programs Offered in 2012

- 0040: Bachelor of Medicine and Bachelor of Surgery (Clayton)
- 3856: Bachelor of Medicine and Bachelor of Surgery (Malaysia)
- 3952: Bachelor of Medicine and Bachelor of Surgery (Gippsland)
- 1074: Bachelor of Medicine and Bachelor of Surgery and Bachelor of Law
- 0041: Honours degree of Bachelor of Medical Science

Contact Details

MBBS

Telephone: +61 3 9905 2048
Facsimile: +61 3 9905 9327
Email: medicineadmissions@monash.edu

Graduate Entry MBBS

Telephone: +61 3 9902 6445
Fax: +61 3 9902 6841
Email: gippslandmed@monash.edu

Bachelor of Medical Science

Telephone: +61 3 9902 0859
Fax: +61 3 9905 9327
Email: bmedsc@monash.edu

Department of Epidemiology and Preventive Medicine

Programs Offered in 2012

- 3420: Graduate Certificate in Biostatistics
- 3416: Graduate Certificate in Clinical Research Methods
- 2870: Graduate Certificate in Health Services Management
- 2868: Graduate Certificate in Occupational Health
- 3421: Graduate Diploma in Biostatistics
- 0702: Graduate Diploma in Clinical Research Methods
- 2314: Graduate Diploma in Health Services Management
- 1884: Graduate Diploma in International Health
- 0160: Graduate Diploma in Occupational and Environmental Health

- 3422: Master of Biostatistics
- 2311: Master of Clinical Research Methods
- 2872: Master of Health Services Management
- 3874: Master of International Health
- 2312: Master of Occupational and Environmental Health
- 0046: Master of Public Health

Contact Details

Telephone: +61 3 990 30555
Facsimile: +61 3 990 30556
Email: pgenquiries@monash.edu



Victorian Institute of Forensic Medicine

Programs Offered in 2012

- 3412: Master of Forensic Medicine

Contact Details

Telephone: + 61 3 9684 4480
Email: debbieh@vifm.org

Obstetrics and Gynaecology

Programs Offered in 2012

- 0101: Graduate Diploma in Reproductive Sciences
- 2309: Master of Clinical Embryology

Contact Details

Telephone: +61 3 9594 7360
Facsimile: +61 3 9594 7416
Email: eprd@monash.edu

Academic Board of Anaesthesia and Perioperative Medicine

Programs Offered in 2012

- 3896: Master of Medicine

Contact Details

Telephone: +61 3 9076 3707
Facsimile: +61 3 9076 2813
Email: studentenquiries.ccs@monash.edu



Higher Degree's by Research

Programs Offered in 2012

- 2977: Master of Biomedical Science
- 2970: Master of Biomedical Science (Part 1)
- 1396: Master of Nursing (Research)
- 3438: Master of Philosophy
- 0100: Master of Reproductive Sciences
- 3407: Master of Rural Health (Research)
- 2698: Master of Social Work (Research)
- 3443: Master of Surgery
- 3852: Doctor of Medicine (supervised)
- 0047: Doctor of Philosophy
- 2932: Doctor of Psychology in Clinical Neuropsychology
- 2116: Doctor of Psychology in Clinical Psychology
- 3403: Doctor of Public Health

Contact Details

Telephone: +61 3 9905 4313

Email: med-research.degrees@monash.edu

