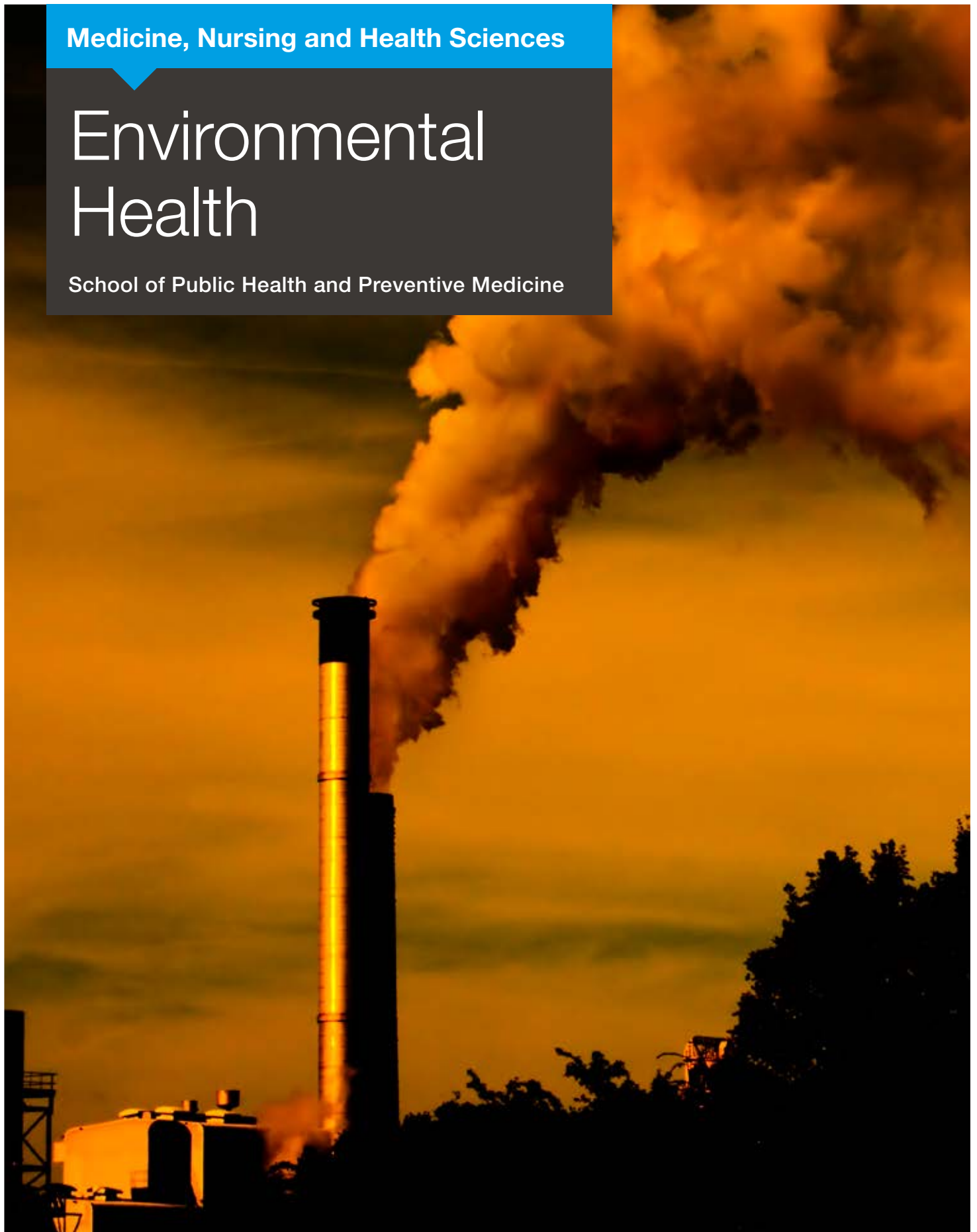




Medicine, Nursing and Health Sciences

Environmental Health

School of Public Health and Preventive Medicine



Environmental Health

Environmental health research identifies and quantifies environmental hazards. It combines skills in clinical medicine, epidemiology, toxicology and microbiology.

Capabilities

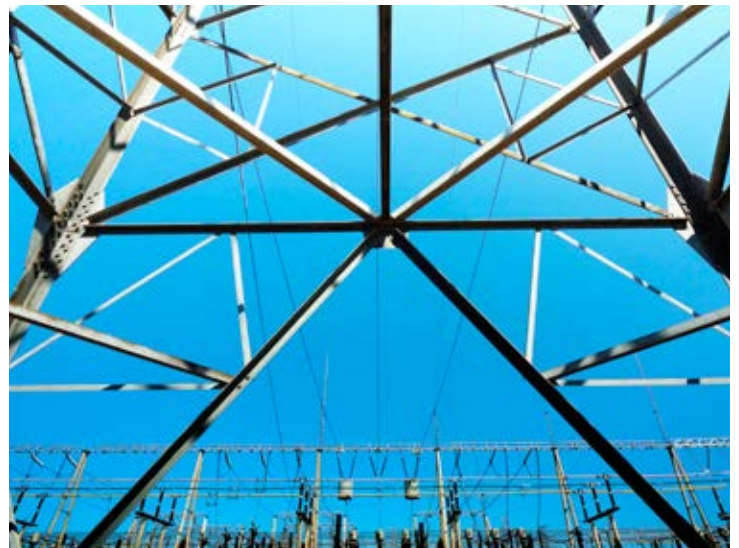
Extensive expertise in:

- Clinical medicine
- Toxicology
- Epidemiology & biostatistics
- Statistical modelling
- Human health risk assessment

Application

Our expertise includes

- Air pollution
- Water quality
- Radiation exposure
- Contamination of soil & water supply
- Exposure measurement and modelling
- Health surveys and monitoring





Training

We train, develop and support health services researchers.

- Short courses in environmental health and related topics
- Undergraduate programs eg MBBS and B Biomed Sci
- Postgraduate programs eg MPH, PhD and Dr Public Health

Some Major Projects

- Developing health-based targets for drinking water quality
- Assessing water ingestion from spray exposures
- Cancer risk with mobile phones
- Distribution and risks of arsenic contamination
- Health effects of air pollution and fire smoke exposure
- Relationship between pesticide exposure and cancer incidence

Contact Us

med-moncoeh@monash.edu

Tel: +61 03 9903 0584

Fax: +61 03 9903 0556

Web: www.coeh.monash.org

The Alfred Centre
Level 6
99 Commercial Road
Melbourne VIC 3004
Australia

 facebook.com/Monash.University

 twitter.com/MonashUni

